

RAILWAY HOUSE
2 REMPSTONE ROAD
SWANAGE
DORSET
BH19 1DW
Opposite the Steam Railway Station



Tel: 01929 423333
(24 hours)
Web: www.milesandson.co.uk
Email: property@milesandson.co.uk



High Street, Swanage, Dorset BH19 2NW

Substantial Victorian terraced stone house convenient for local amenities, schools and open country walks. 4 bedrooms (1 en-suite shower room/W.C.), lounge, extended kitchen/family dining room, bathroom/W.C., gas central heating, double glazed windows, south facing rear garden, some hill and rural views.

- Substantial terraced Victorian Purbeck stone house
- Lounge
- Gas central heating
- On street parking in nearby roads
- South facing rear garden
- Extended kitchen and family dining room
- Double glazed windows
- 4 bedrooms
- Bathroom/W.C. En-suite shower room/W.C.
- Some hill and rural views

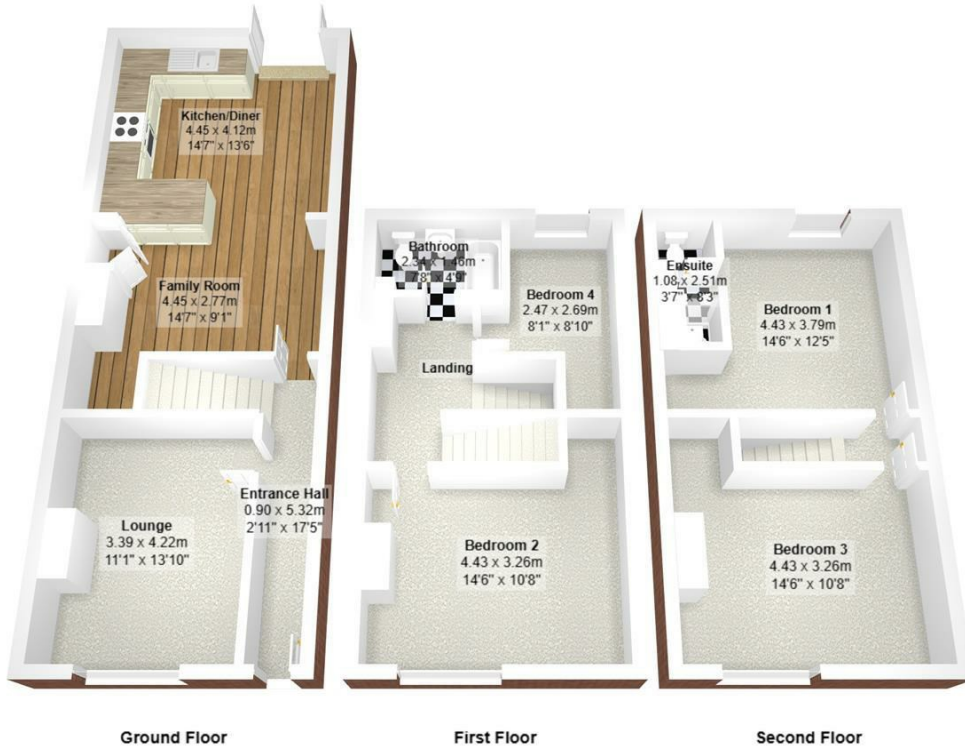
Asking Price £485,000

High Street, Swanage, Dorset BH19 2NW

* Awaiting full particulars *



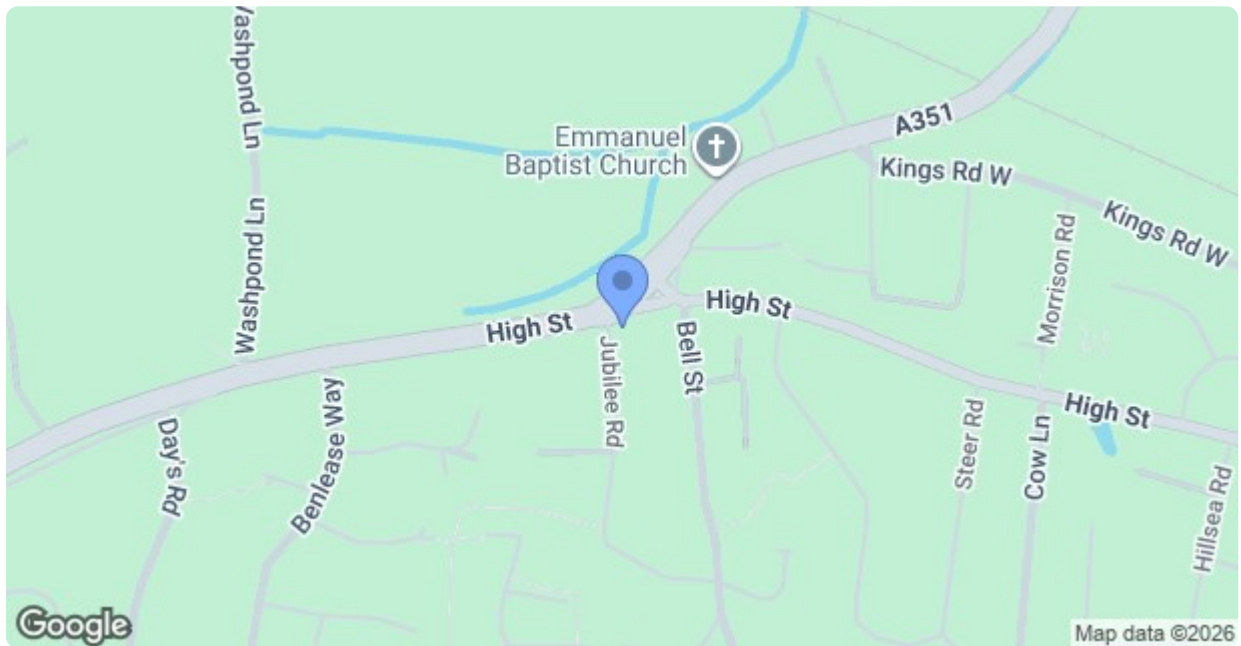




Ground Floor

First Floor

Second Floor



Energy Efficiency Rating		
	Current	Potential
Very energy efficient - lower running costs		
(92 plus) A		
(81-91) B		
(69-80) C		
(55-68) D		
(39-54) E		
(21-38) F		
(1-20) G		
Not energy efficient - higher running costs		
England & Wales	EU Directive 2002/91/EC	